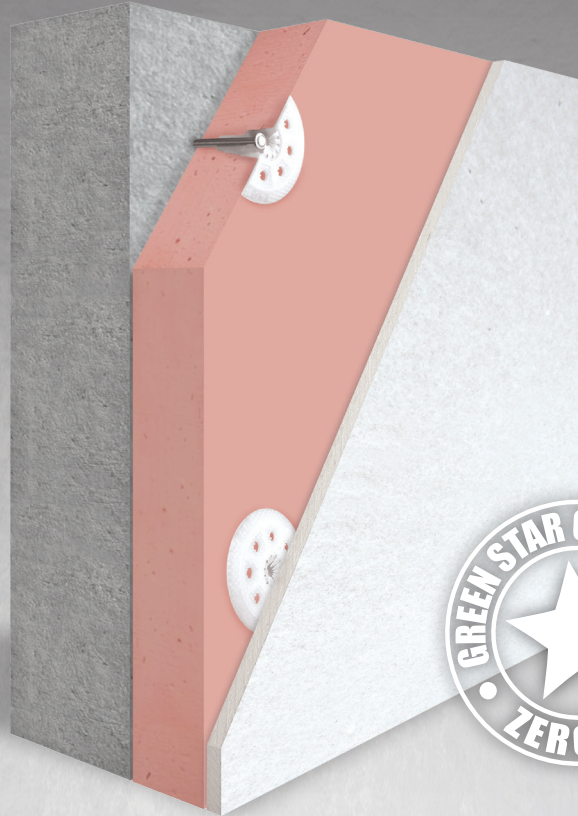


2XR ULTRA WALL



COST EFFECTIVE!

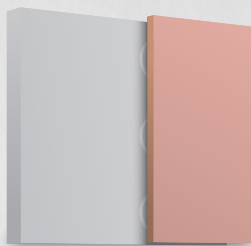
THE ULTRA WALL SYSTEM USES ULTRA FIX FASTENERS WHICH ENABLES YOU TO USE STANDARD PLASTER SHEETS STRAIGHT OVERTOP, RESULTING IN LESS JOINTS, THEREFORE SAVING YOU VALUABLE HOURS IN FINISHING THE PLASTER AND PROVIDING YOU A MORE CONSISTENT AND SMOOTH FINISHED PRODUCT!

ITEM	UNIT	SPECIFICATION				
Density	kg/m ³	45	Dimensions:	Standard size is 2270mm x 1200mm		
Compressive Strength	Kpa	250		Other dimensions available on request		
Water Absorption	%	1.9		Thicknesses:	Standard thicknesses are: 35mm and 60mm	
Fire Property	AS/NZ 1530-3	0,0,0,1			Other thicknesses available on request	
Fire Rating	AS3837	Group 1		Type of Edge:	Straight Edge	
Max Smoke Density	%	2			Colour:	Orange
Dimension Change	%	0.3				
Working Temperature	Celsius	-260 - + 150				
Board Size	mm	2270 x 1200				

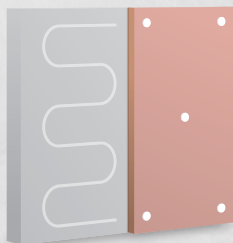
THE ULTRA WALL SYSTEM IS SUITABLE FOR WALLS CONSTRUCTED WITH SOLID MATERIAL SUCH AS BRICK, CONCRETE OR BLOCK ENSURING THEY ARE FREE FROM MOISTURE PENETRATION.



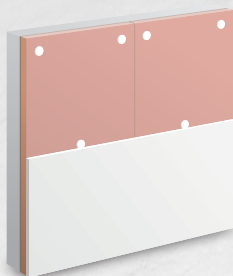
Apply a continuous bead of acrylic sealant adhesive around perimeter and around any openings such as windows and doors in order to provide a seal.



Gun apply blobs of acrylic sealant adhesive to the back of the board or the wall, 25mm in diameter. A single squeeze at 400mm centres in both directions or to the specific instructions of the adhesive manufacturer. Ensure blobs are at least 25mm from the edge.



Tap the board back firmly using a straight edge ensuring that the vertical edge is plumb. Fasten to wall with 5 ultra fixings (1 in each corner and 1 in centre).



Attach gyprock in traditional method according to manufacturer's specifications. Ensure adequate fixings (powers fasteners tapper & csk head or equivalent) to satisfy gyprock manufacturers' specifications.



CHOICE
SOLUTIONS

phone 1300 884 611
fax 1300 884 677

email: sales@choicesolutions.net.au
website: www.choicesolutions.net.au



2XR ULTRA WALL
for better insulation